

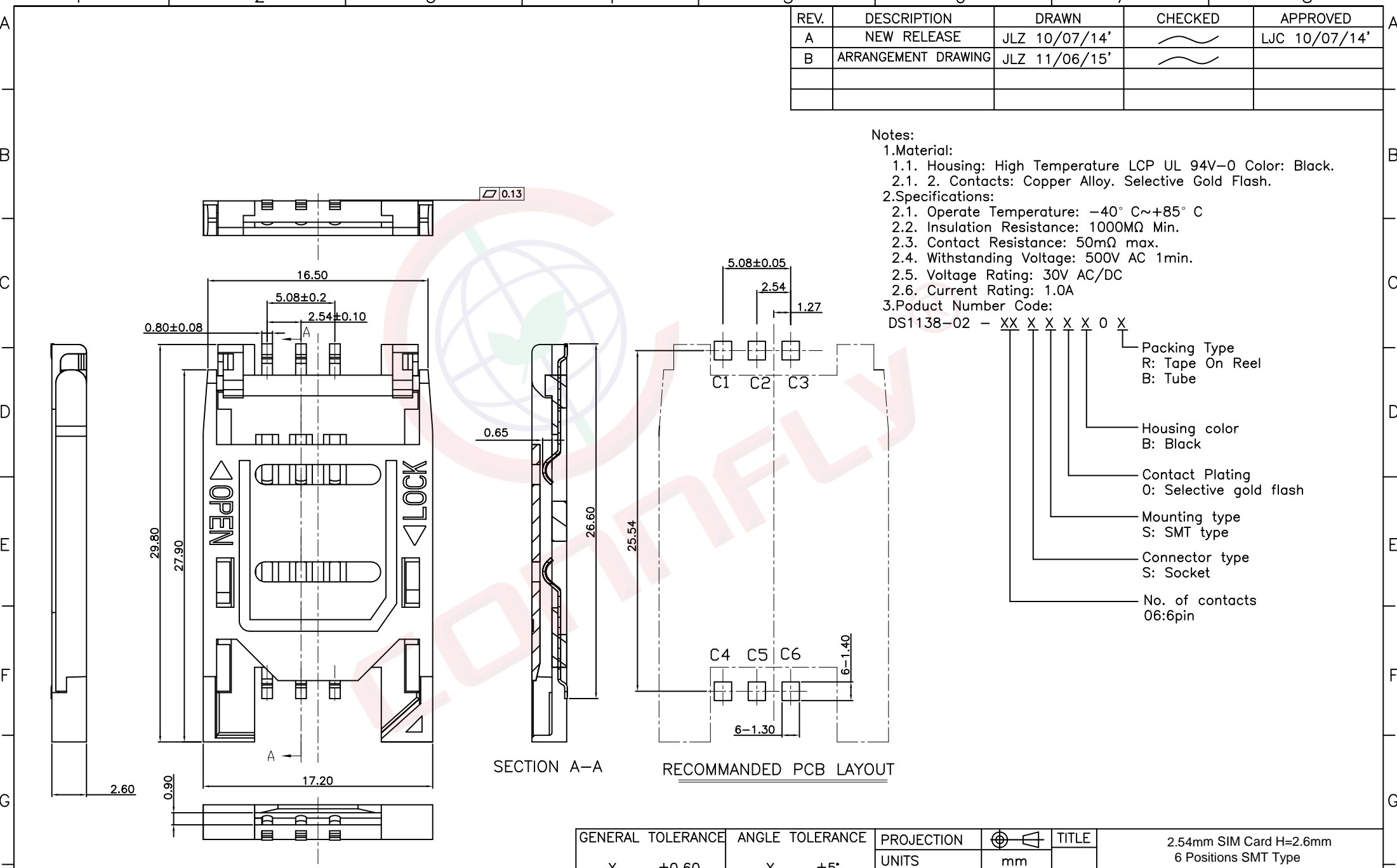
REV.	DESCRIPTION	DRAWN	CHECKED	APPROVED
A	NEW RELEASE	JLZ 10/07/14'		LJC 10/07/14'
B	ARRANGEMENT DRAWING	JLZ 11/06/15'		

Notes:

1. Material:
 - 1.1. Housing: High Temperature LCP UL 94V-0 Color: Black.
 - 2.1. 2. Contacts: Copper Alloy. Selective Gold Flash.
2. Specifications:
 - 2.1. Operate Temperature: $-40^{\circ}\text{C} \sim +85^{\circ}\text{C}$
 - 2.2. Insulation Resistance: 1000M Ω Min.
 - 2.3. Contact Resistance: 50m Ω max.
 - 2.4. Withstanding Voltage: 500V AC 1min.
 - 2.5. Voltage Rating: 30V AC/DC
 - 2.6. Current Rating: 1.0A
3. Product Number Code:

DS1138-02 - XX X X X X 0 X

- Packing Type
R: Tape On Reel
B: Tube
- Housing color
B: Black
- Contact Plating
0: Selective gold flash
- Mounting type
S: SMT type
- Connector type
S: Socket
- No. of contacts
06:6pin



GENERAL TOLERANCE		ANGLE TOLERANCE	
X.	±0.60	X.	±5°
.X	±0.38	.X	±3°
.XX	±0.25	.XX	±2°

DRAWING TYPE	CUSTOMER		
SCALE	1:1	SHEET	1 OF 1
DRAWING NO.	C-DS1138-02-XXXXXXX-B		

PROJECTION		TITLE	2.54mm SIM Card H=2.6mm 6 Positions SMT Type	
UNITS	mm			
SHEET SIZE	A4	SERIES	DS1138-02 SERIES	



晨翔电子有限公司
CONNFLY® CONNFLY ELECTRONIC CO., LTD