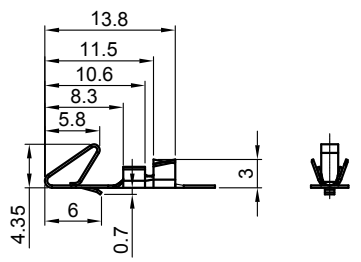


The information provided herein is from CONNELY Electronic Co., Ltd. and is confidential. Any disclosure to a party other than the recipient is prohibited. The intellectual properties and its rights contained herein, including but not limited to, trademarks, patents, copyrights, trade secrets, and technical know-how, are owned exclusively by CONNELY or its affiliates. Unauthorized use or reproduction of any part of this document is strictly prohibited. CONNELY may enforce its intellectual property rights at its own discretion, failures or delays to exercise such rights does not constitute a waiver of such rights.

REV.	DESCRIPTION	DRAWN	CHECKED	APPROVED
A	NEW RELEASE	LL 12/04/06'		LJC 12/04/06'
B	Change Dimension	HZW 04/06/17'		LJC 04/06/17'
D	DRAWING UPDATE	JLZ 12/20/21'		

Female Terminal



Terminal P/N code:  
T-DS1074-S C X 0 0

Contact Plating  
6: Tin

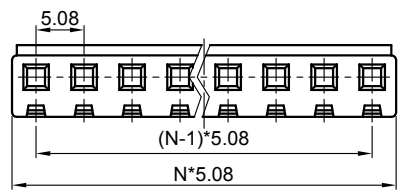
Female Terminal

Wire Range		O.D of Wire
Section Area (mm) <sup>2</sup>	AWG#	mm
0.2~0.75	24~18	1.3~2.8

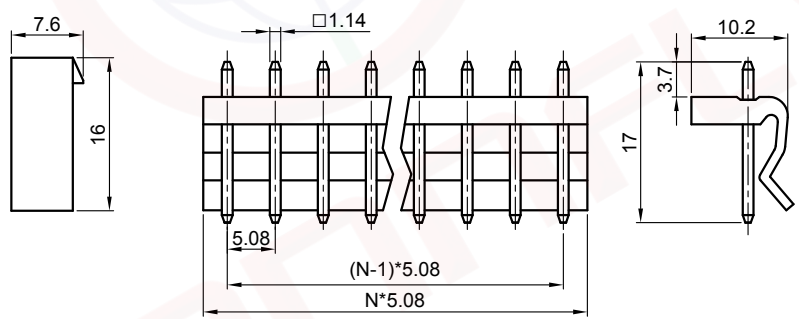
NOTES:

- Main specifications
  - Housing material: NYLON 66
  - Wire range: AWG#24~#18
  - Rated voltage: 250V
  - Rated current: 7A
  - Contact resistance: 30mΩ
  - Insulation resistance: 1000MΩ
  - Withstanding voltage: 1500V,AC 1 minute
  - Temperature range: -25 ~ +85°C
  - Recommend PC board thickness:1.6mm

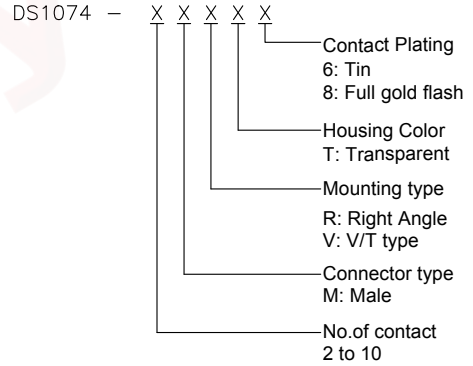
Female Housing



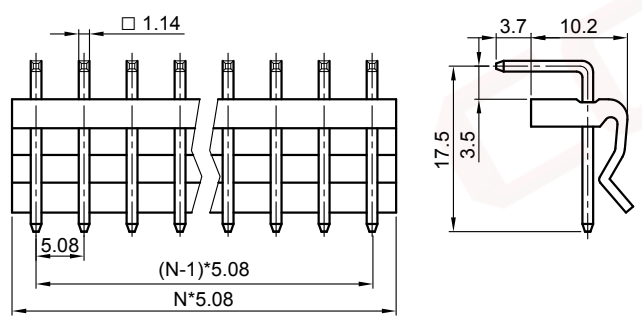
Male V/T type



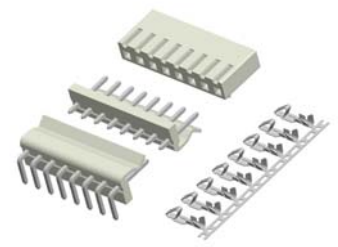
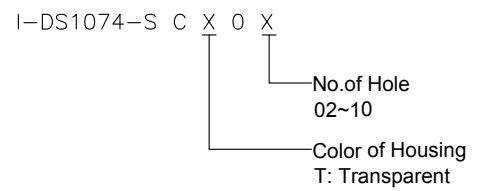
2. Product number code:



Male Right Angle

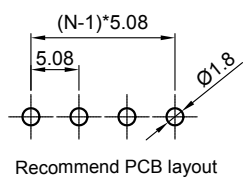


Housing P/N code:



(Series Image-Reference Only)

N=No. of contacts



GENERAL TOLERANCE		ANGLE TOLERANCE		PROJECTION	TITLE
X.	±0.60	X.	±5°		5.08mm Wafer & Housing
.X	±0.38	.X	±3°	mm	
.XX	±0.25	.XX	±2°		
DRAWING TYPE		CUSTOMER		SHEET SIZE	SERIES
SCALE		1:1		A4	DS1074 SERIES
DRAWING NO.		C-DS1074-XXXXX-D		SHEET 1 OF 1	

