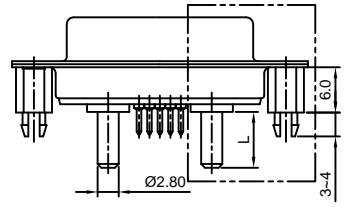
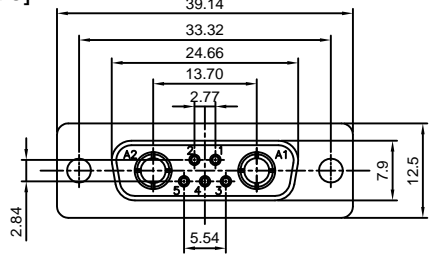
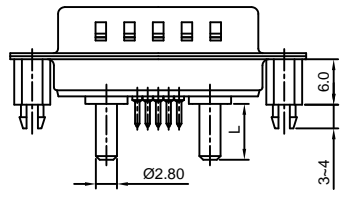
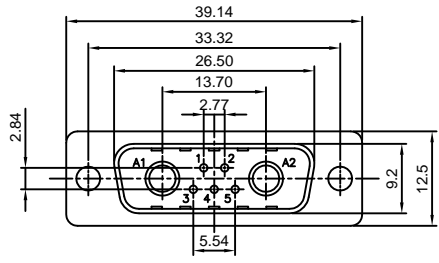


The information provided herein is from CONNELY Electronic Co., Ltd. and is confidential. Any disclosure to a party other than the recipient is prohibited. The intellectual properties and its rights contained herein, including but not limited to, trademarks, patents, copyrights, trade secrets, and technical know-how, are owned exclusively by CONNELY or its affiliates. Unauthorized use or reproduction of any part of this document, in any form or by any means, without the prior written permission of CONNELY, may constitute a violation of applicable laws and regulations. CONNELY may enforce its intellectual property rights at its own discretion, failures or delays to exercise such rights does not constitute a waiver of such rights.

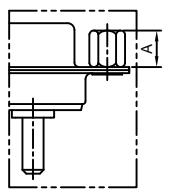
[Female]



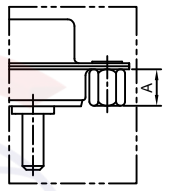
[Male]



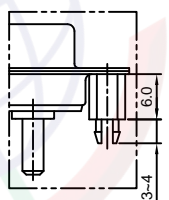
(Series Image-Reference Only)



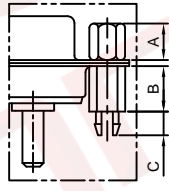
CC type



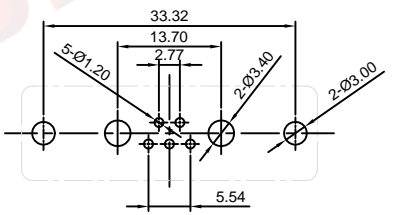
CS type



BR type



BRJ type



Recommend PCB layout (Tolerance:±0.05)

REV.	DESCRIPTION	DRAWN	CHECKED	APPROVED
A	NEW RELEASE	LJC 01/17/09'		
B	ADD P/N CODE	JLZ 06/20/19'		

NOTES:

- Electrical characteristics:
 - Contact resistance: 20mΩ Max. Initial.
 - Dielectric withstanding voltage: 500V AC(rms)for 1 minute.
 - Insulation resistance: 1000MΩ Min.
 - Current rating: 5A/40A(Power pin)
 - Voltage rating: 300V
- Environment characteristics:
 - Temperature range: -40° C ~ +105° C.
- Mechanical characteristics:
 - Durability: 500 cycles.
 - Contact retention force: 1Kgf Minimum.
- Materials:
 - Shell: SPCC.
 - Contact: Copper alloy.
 - Insulator: Thermoplastic UL 94V-0,Glass fiber filled.
- Part number code:

DS1034-13- X X X X X - X

- Pin length Dim. L
N/A Code: L=7.4mm
025: L=2.5mm
050: L=5.0mm
.....
- Screw Dim. A
S: Standard(W/O nut)
4: 4.80
5: 5.80
6: 6.00
- Screw type
S: Standard(W/O nut)
1: CC type
2: CS type
3: BR type
4: BRJ type Dim. B:6.00 C: 3-4mm
5: BRJ type Dim. B:6.00 C: 5-6mm
- Contact plating
8: Full gold flash
- Shell plating
N: Fornt shell nickel,Back shell tin
- Housing color
B: Black
- Connector type
M: Male
F: Female

GENERAL TOLERANCE	ANGLE TOLERANCE	PROJECTION	TITLE	MACHINE PIN D-SUB 5+2
X. ±0.60	X. ±5°	UNITS	mm	V/T TYPE
.X ±0.38	.X ±3°	SHEET SIZE	A4	SERIES DS1034-13 SERIES
.XX ±0.25	.XX ±2°	晨翔电子有限公司 CONNFLY CONNELY ELECTRONIC CO. LTD		
DRAWING TYPE	CUSTOMER			
SCALE	1:1 SHEET 1 OF 1			
DRAWING NO.	C-DS1034-13-XXXX-X-B			