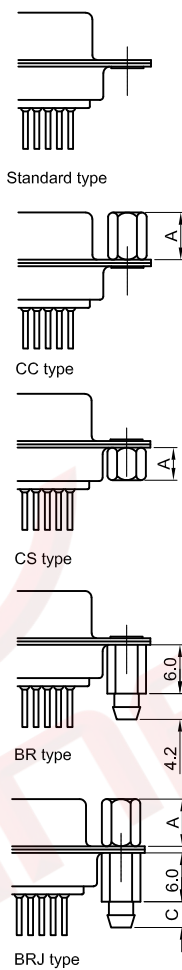
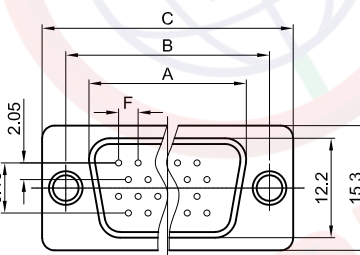
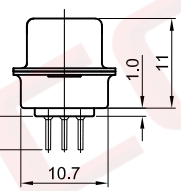
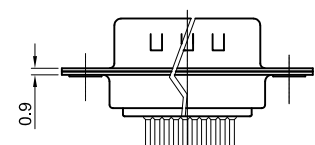
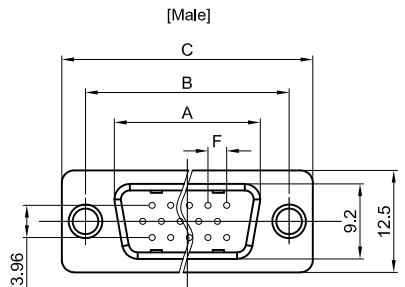
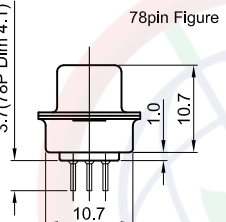
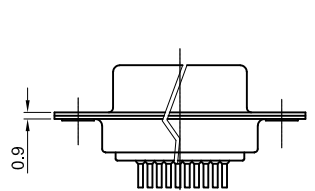
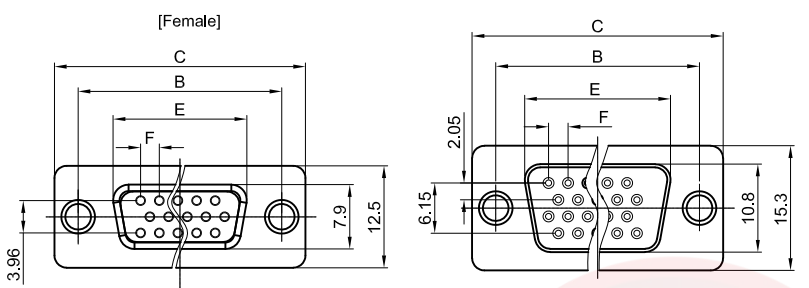


The information provided herein is from CONNELY Electronic Co., Ltd. and is confidential. Any disclosure to a party other than the recipient is prohibited. The intellectual properties and its rights contained herein, including but not limited to, trademarks, patents, copyrights, trade secrets, and technical know-how, are owned exclusively by CONNELY or its affiliates. Unauthorized use of this information in any format or manner. CONNELY may enforce its intellectual property rights at its own discretion; failures or delays to exercise such rights does not constitute a waiver of such rights.

1 2 3 4 5 6 7 8

Dept	DC	1							
Qty	ED	1							
	IE	1							
	ISO	1							
	PD	1							
	R&D	1							
	SD	1							
	QA	1							
	QC	1							
	QE	1							

REV.	DESCRIPTION	DRAWN	CHECKED	APPROVED
A	NEW RELEASE	LL 09/25/06'		LJC 09/25/06'
C	DRAWING UPDATE	JLZ 08/26/19'		



Dimension

Position	A	B	C	E	F
15	17.90	24.99	30.80	16.33	2.29
26	26.50	33.32	39.14	24.66	2.29
44	40.00	47.04	53.04	38.38	2.29
62	56.50	63.50	69.32	54.84	2.41
78	54.30	61.00	67.04	52.34	2.41

NOTES:

- Electrical characteristics:
  - Contact resistance: 20mΩ Max. Initial.
  - Dielectric withstanding voltage: 500V AC(rms) for 1 minute.
  - Insulation resistance: 1000MΩ Min.
- Environment characteristics:
  - Temperature range: -40°C~+105°C.
- Materials:
  - Insulator:PBT+Glass fiber
  - Shell:Steel
  - Contact:Copper alloy
- Product number code:

DS1077 - X X X X X X

Screw DIM. A  
 S: Standard(W/O nut)  
 1: 5.00 2: 3.00 3: 5.20  
 4: 4.80 5: 5.80 6: 4.00

Screw type  
 S: Standard(W/O nut)  
 1: CC type 2: CS type  
 3: BR type  
 4: BRJ type DIM. DIM C: 4.2  
 5: BRJ type DIM. DIM C: 5-6  
 6: BRJ type DIM. DIM C: 4.2  
 (Screws in bulk package)

Shell plating  
 N:Fornt shell nickel,Back shell tin

Contact plating  
 8: Full gold flash  
 0: Selective gold flash

Housing color  
 B:Black  
 W:White  
 U:Blue

Connector type  
 M:Male  
 F:Female

No.of contacts  
 15 26 44 62 78

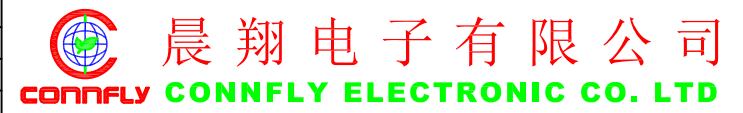


(Series Image-Reference Only)

GENERAL TOLERANCE	ANGLE TOLERANCE
X. ±0.60	X. ±5°
.X ±0.38	.X ±3°
.XX ±0.25	.XX ±2°

DRAWING TYPE	CUSTOMER
SCALE	1:1 SHEET 1 OF 2
DRAWING NO.	C-DS1077-XXXXXX-C

PROJECTION		TITLE	D-SUB H.DIP STRAIGHT TYPE
UNITS	mm	SERIES	DS1077 SERIES

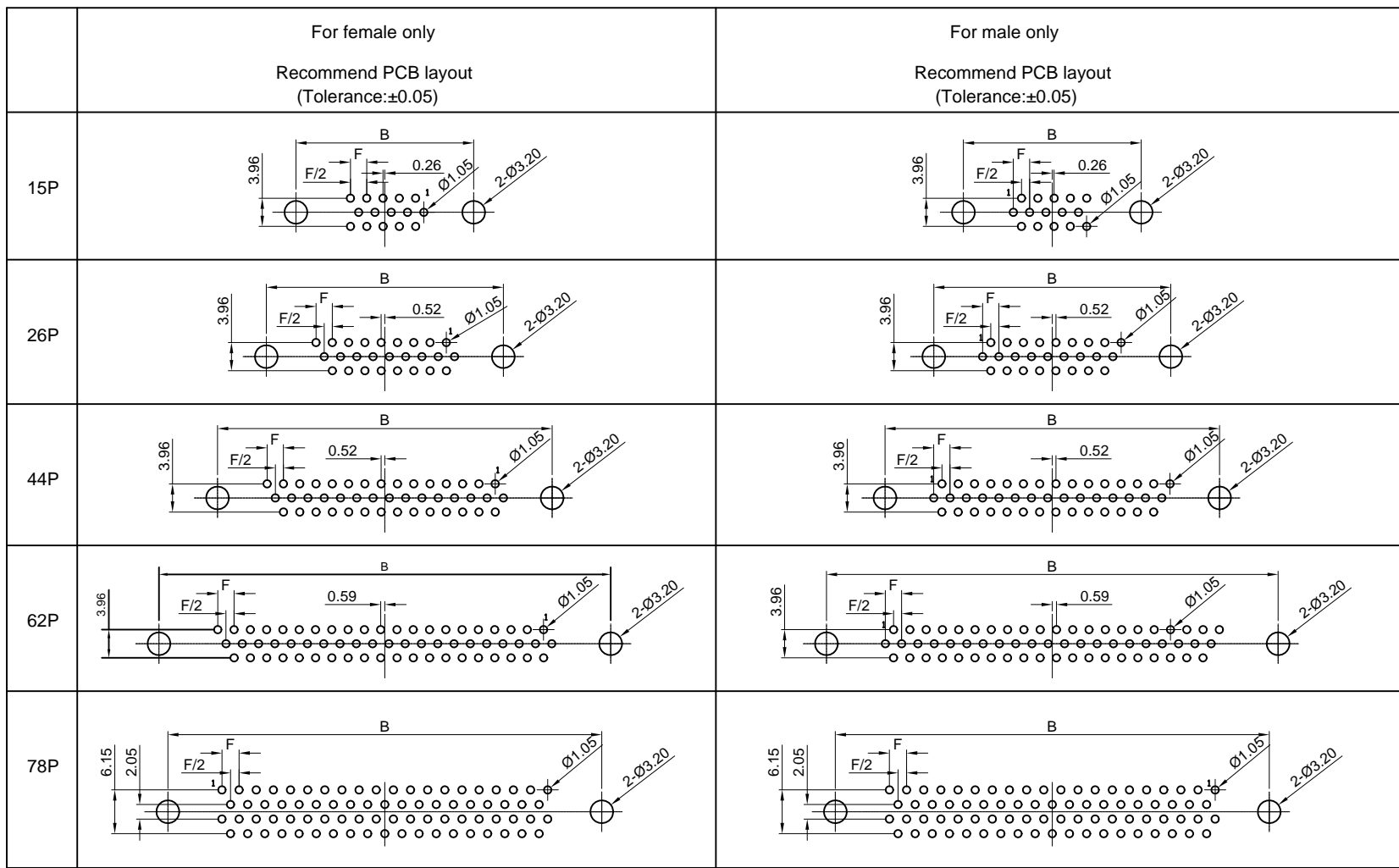


1 2 3 4 5 6 7 8

Dept	
Qty	
DC	1
ED	1
IE	1
ISO	1
PD	1
R&D	1
SD	1
QA	1
QC	1
QE	1

REV.	DESCRIPTION	DRAWN	CHECKED	APPROVED
A	NEW RELEASE	LL 09/25/06'		LJC 09/25/06'
C	DRAWING UPDATE	JLZ 08/26/19'		

The information provided herein is from CONNELY Electronic Co., Ltd. and is confidential. Any disclosure to a party other than the recipient is prohibited. The intellectual properties and its rights contained herein, including but not limited to, trademarks, patents, copyrights, trade secrets, and technical know-how, are owned exclusively by CONNELY or its affiliates. Unauthorized use or reproduction of any part of this document is strictly prohibited. CONNELY may enforce its intellectual property rights at its own discretion, failures or delays in exercising such rights does not constitute a waiver of such rights.



GENERAL TOLERANCE		ANGLE TOLERANCE		PROJECTION		TITLE	D-SUB H.DIP STRAIGHT TYPE	
X.	±0.60	X.	±5°	UNITS	mm			
.X	±0.38	.X	±3°	SHEET SIZE	A4	SERIES	DS1077 SERIES	
.XX	±0.25	.XX	±2°	<b>晨翔电子有限公司</b> <b>CONNFLY CONNELY ELECTRONIC CO. LTD</b>				
DRAWING TYPE		CUSTOMER						
SCALE	1:1	SHEET	2 OF 2					
DRAWING NO.		C-DS1077-XXXXXXX-C						