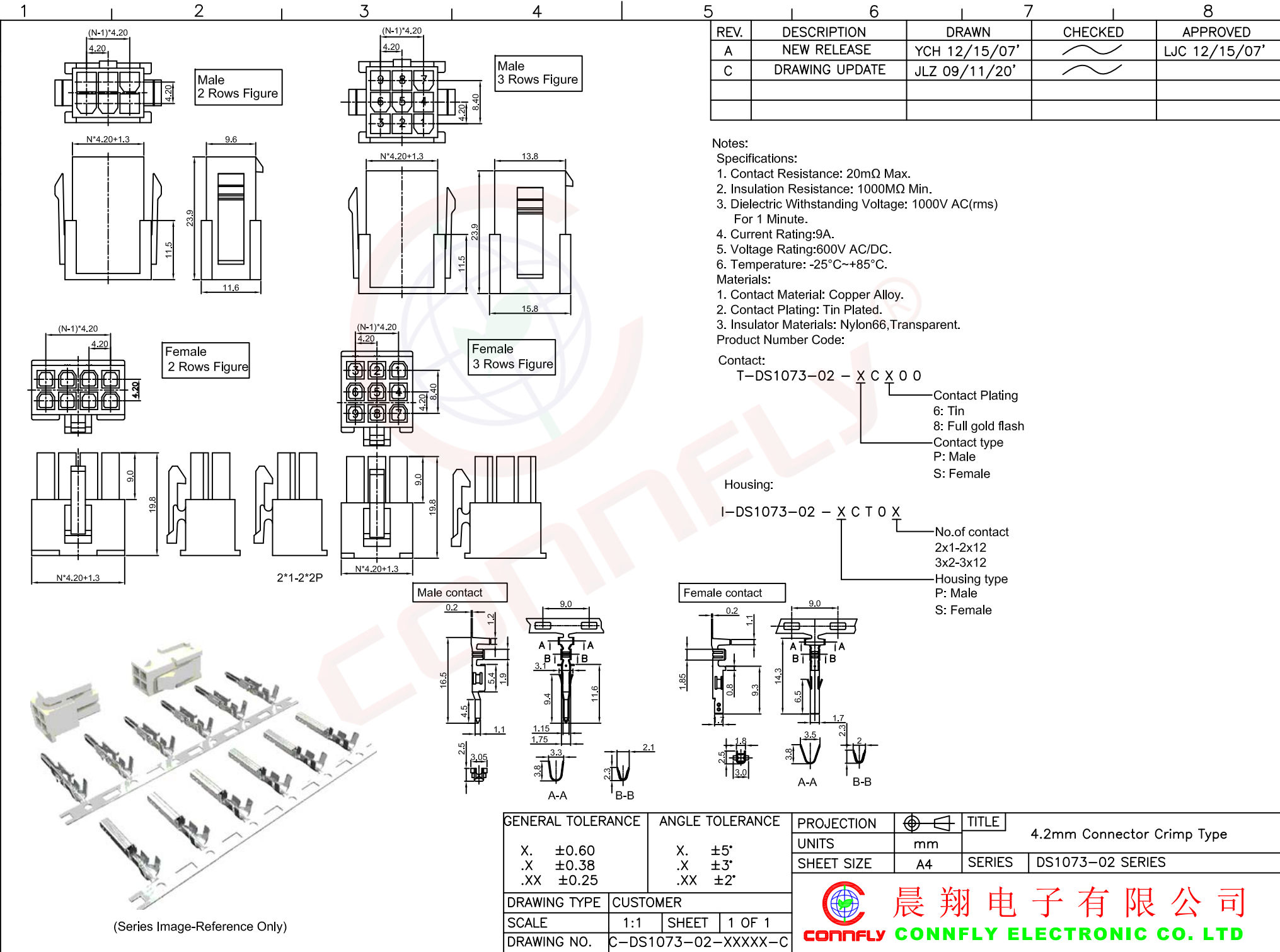


Dept  
Qty  
DC 1  
ED 1  
IE 1  
ISO 1  
PD 1  
R&D 1  
SD 1  
QA 1  
QC 1  
QE 1

The information provided herein is from CONNLY Electronic Co., Ltd. and is confidential. Any disclosure to a party other than the recipient is prohibited. The intellectual properties and its rights contained herein, including but not limited to, trademarks, patents, copyrights, trade secrets, and technical know-how, are owned exclusively by CONNLY or its affiliates. Unauthorized use or modification is strictly prohibited. CONNLY may enforce its intellectual property rights at its own discretion; failures or delays to exercise such rights does not constitute a waiver of such rights.



REV.	DESCRIPTION	DRAWN	CHECKED	APPROVED
A	NEW RELEASE	YCH 12/15/07'		LJC 12/15/07'
C	DRAWING UPDATE	JLZ 09/11/20'		

Notes:  
Specifications:  
1. Contact Resistance: 20mΩ Max.  
2. Insulation Resistance: 1000MΩ Min.  
3. Dielectric Withstanding Voltage: 1000V AC(rms) For 1 Minute.  
4. Current Rating:9A.  
5. Voltage Rating:600V AC/DC.  
6. Temperature: -25°C~+85°C.  
Materials:  
1. Contact Material: Copper Alloy.  
2. Contact Plating: Tin Plated.  
3. Insulator Materials: Nylon66, Transparent.  
Product Number Code:

Contact:  
T-DS1073-02 - X C X 0 0  
 Contact Plating  
 6: Tin  
 8: Full gold flash  
 Contact type  
 P: Male  
 S: Female

Housing:  
I-DS1073-02 - X C T 0 X  
 No. of contact  
 2x1-2x12  
 3x2-3x12  
 Housing type  
 P: Male  
 S: Female

GENERAL TOLERANCE		ANGLE TOLERANCE		PROJECTION	TITLE
X.	±0.60	X.	±5°		4.2mm Connector Crimp Type
.X	±0.38	.X	±3°	mm	
.XX	±0.25	.XX	±2°		SHEET SIZE A4
DRAWING TYPE		CUSTOMER		SERIES DS1073-02 SERIES	
SCALE		1:1		SHEET 1 OF 1	
DRAWING NO.		C-DS1073-02-XXXXX-C			

晨翔电子有限公司  
CONNFLY CONNLY ELECTRONIC CO. LTD