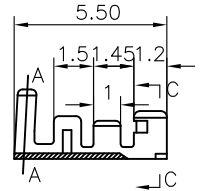
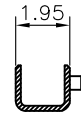


REV.	DESCRIPTION	DRAWN	CHECKED	APPROVED
A	NEW RELEASE	LL 07/05/06'		LL 07/05/06'
B	DRAWING UPDATE	JLZ 09/20/17'		

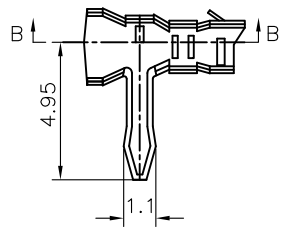
Contact



SECTION B-B



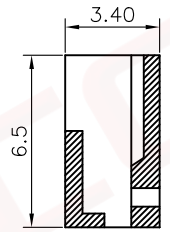
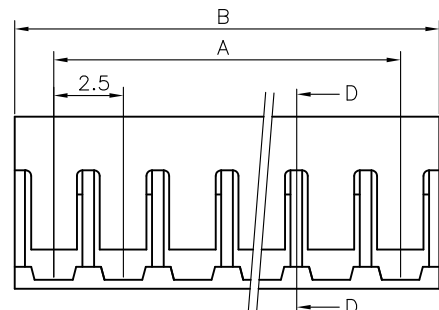
SECTION C-C



Housing



SECTION A-A



SECTION D-D

Female HOUSING

Position	DIMENSION	
	A	B
2	2.5	6.0
3	5.0	8.5
4	7.5	11.0
5	10.0	13.5
6	12.5	16.0
7	15.0	18.5
8	17.5	21.0
9	20.0	23.5
10	22.5	26.0
11	25.0	28.5
12	27.5	31.0
13	30.0	33.5
14	32.5	36.0
15	35.0	38.5
16	37.5	41.0

NOTES:

1. MAIN SPECIFICATIONS

- . Housing material: NYLON 66
- . Wire range: AWG#28~#22
- . Rated voltage: 250V
- . Rated current: 2A
- . Contact resistance: $\leq 0.03\Omega$
- . Insulation resistance: $\geq 1000M\Omega$
- . Withstanding voltage: 500V,AC 1 minute
- . Temperature range: $-25 \sim +85^{\circ}C$
- . Recommend PC board thickness: 1.2~1.6mm

2. PRODUCT NUMBER CODE:

Contact

T - DS1068-01 - S C 6 0 0

└ Contact Plating
6: Tin

Housing

I - DS1068-01 - S C W 0 X

└ No.of contact
02~16

GENERAL TOLERANCE		ANGLE TOLERANCE		PROJECTION		TITLE	P.C.B CONNECTOR 2.5mm SCNW TYPE	
X.	±0.60	X.	±5°	UNITS	mm	SHEET	DS1068-01 SERIES	
.X	±0.38	.X	±3°	SHEET SIZE	A4			
.XX	±0.25	.XX	±2°					
DRAWING TYPE		CUSTOMER			晨翔电子有限公司 CONNFLY ELECTRONIC CO. LTD			
SCALE		1:1	SHEET 1 OF 1					
DRAWING NO.		C-DS1068-01-XXXXX-B						