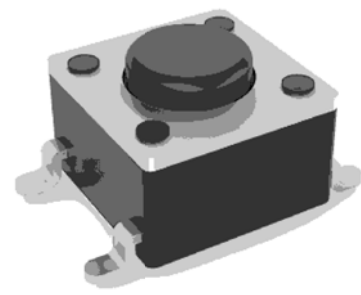
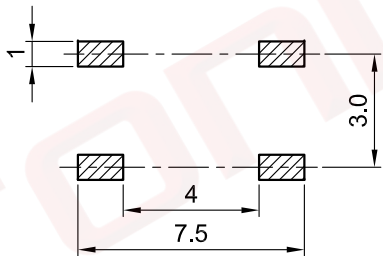
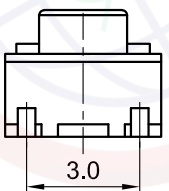
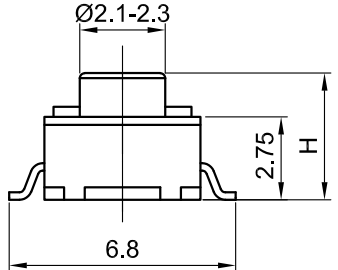
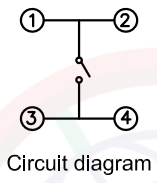
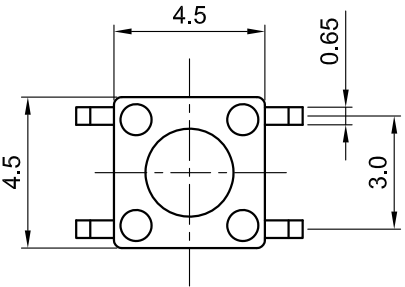


The information provided herein is from CONNPLY Electronic Co., Ltd. and is confidential. Any disclosure to a party other than the recipient is prohibited. The intellectual properties and its rights contained herein, including but not limited to, trademarks, patents, copyrights, trade secrets, and technical know-how, are owned exclusively by CONNPLY or its affiliates. Unauthorized use or modification is strictly prohibited. CONNPLY may enforce its intellectual property rights at its own discretion; failures or delays to exercise such rights does not constitute a waiver of such rights.

1 2 3 4 5 6 7 8

Dept	Qty
DC	1
ED	1
IE	1
ISO	1
PD	1
R&D	1
SD	1
QA	1
QC	1
QE	1

REV.	DESCRIPTION	DRAWN	CHECKED	APPROVED
A	NEW RELEASE	JLZ 07/21/20'		
B	DRAWING UPDATE	JLZ 04/15/22'		



(Series Image-Reference Only)

PCB layout
Tolerance±0.05

NOTES:

1. Specifications

- Switch Function: Single Pole Single Throw
- Contact Rating: 50mA at 12Vdc
- Insulation Resistance:100MΩ min.
- Contact Resistance:100mΩ max.
- Operating Life:100,000 cycles
- Travel:0.15±0.1mm
- Operation Temperature Range: -25°C to +70°C
- Wave Soldering: Recommended Solder Temperature At 500°f(260°C)max. 5 Seconds,Subject To PCB 1.6mm Thickness.

2. Product number code:

DS1042-32 - X X X X X X X

- Operating Life
05:50,000 cycles
- Operating force
160: 160±50gf
260: 260±50gf
- Packing type
A: polybag
R: tape & reel
- Actuator color
B: Black N:Brown
- Housing color
B: Black N:Brown
- Profile Height(DIM. H)
038:3.8mm 040:4.0mm 043:4.3mm
045:4.5mm 050:5.0mm 060:6.0mm
070:7.0mm 080:8.0mm 095:9.5mm.....
- No. of contacts
4: 4P

GENERAL TOLERANCE		ANGLE TOLERANCE		PROJECTION		TITLE	Tact Switch SMT Type 4.5mmX4.5mm	
X.	±0.60	X.	±5°	UNITS	mm			
.X	±0.38	.X	±3°	SHEET SIZE	A4	SERIES	DS1042-32 SERIES	
.XX	±0.25	.XX	±2°	晨翔电子有限公司 CONNPLY CONNPLY ELECTRONIC CO. LTD				
DRAWING TYPE		CUSTOMER						
SCALE		1:1	SHEET 1 OF 1					
DRAWING NO.		C-DS1042-32-XXXXXXX-B						

1 2 3 4 5 6 7 8